



TRIKKE™
PROFESSIONAL MOBILITY

Operation Quick
Reference Guide

**Wear a “quality”
ASTM certified
Safety HELMET**



Adjust head fit

Adjust straps

Must be buckled under the chin

BATTERY installation/removal

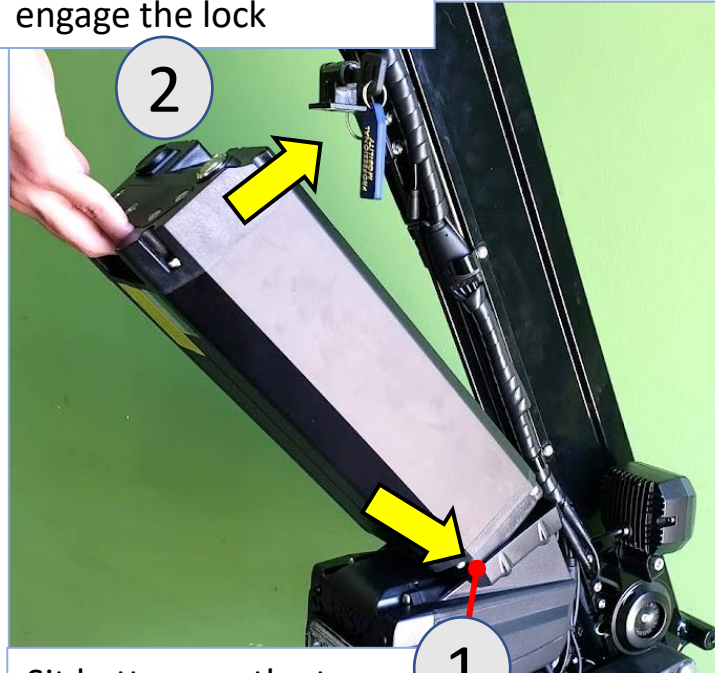


battery lock KEY

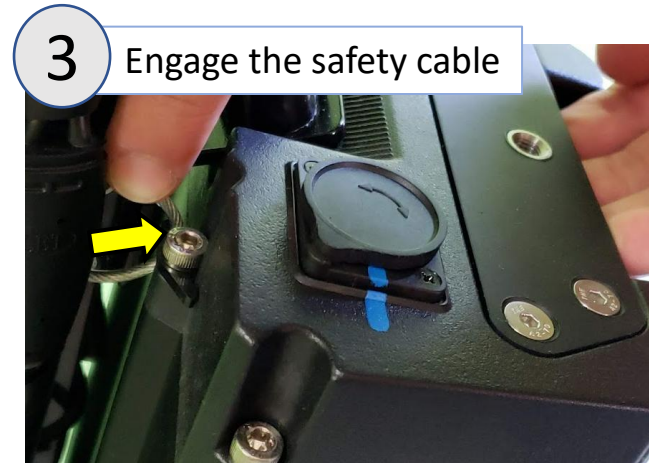


WARNING Switch battery **OFF**
For removal and installation

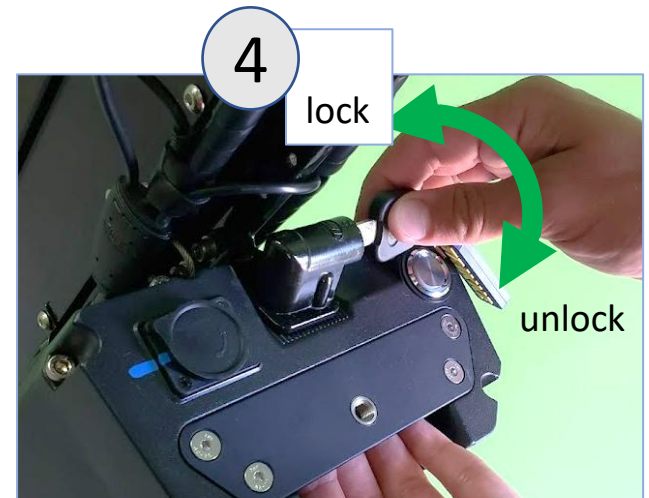
Push battery forward to engage the lock



Sit battery on the tray tilted to the back



3 Engage the safety cable



Lock the battery by turning key 90 degrees CW – **remove the key!**



MOUNTING

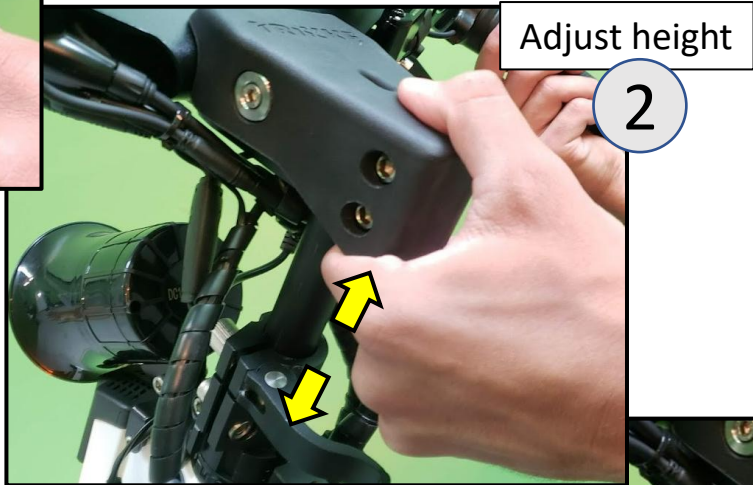
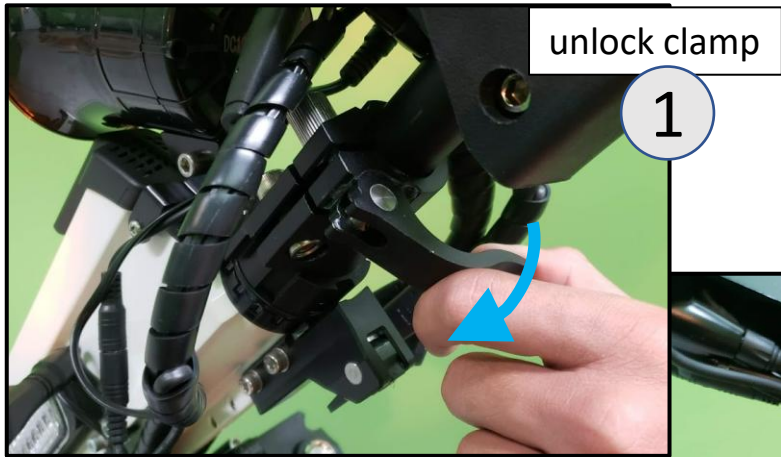
- Approach the vehicle from the back center
- Hold handlebars and squeeze brakes
- Step on the decks one foot at a time

DISMOUNTING

- Lock parking brakes
- Step off one foot at a time



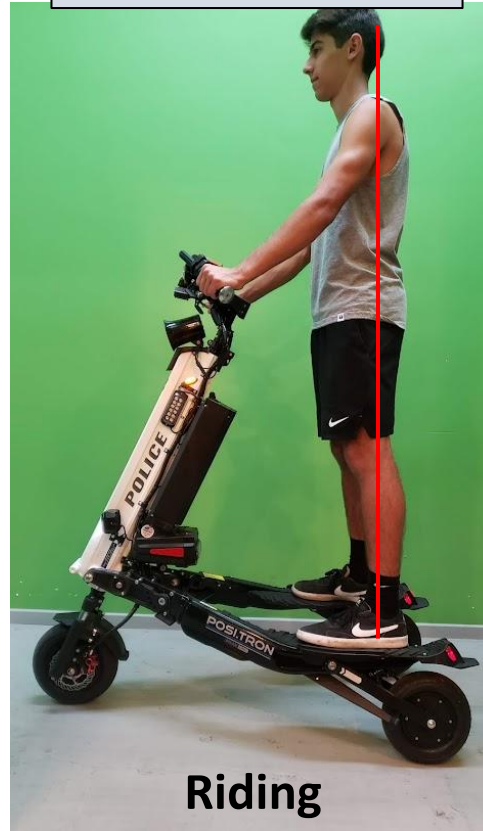
Adjusting Handlebar Height



**RIDING
POSTURE**



Take-off
Lean forward

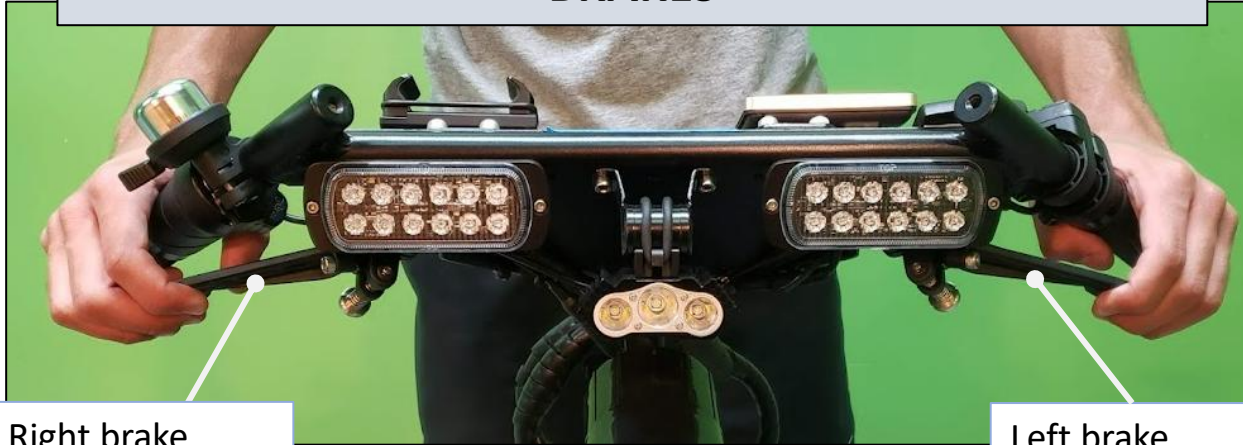


Riding
Neutral stance



Braking
Lean back

BRAKES



Right brake
lever
REAR WHEELS

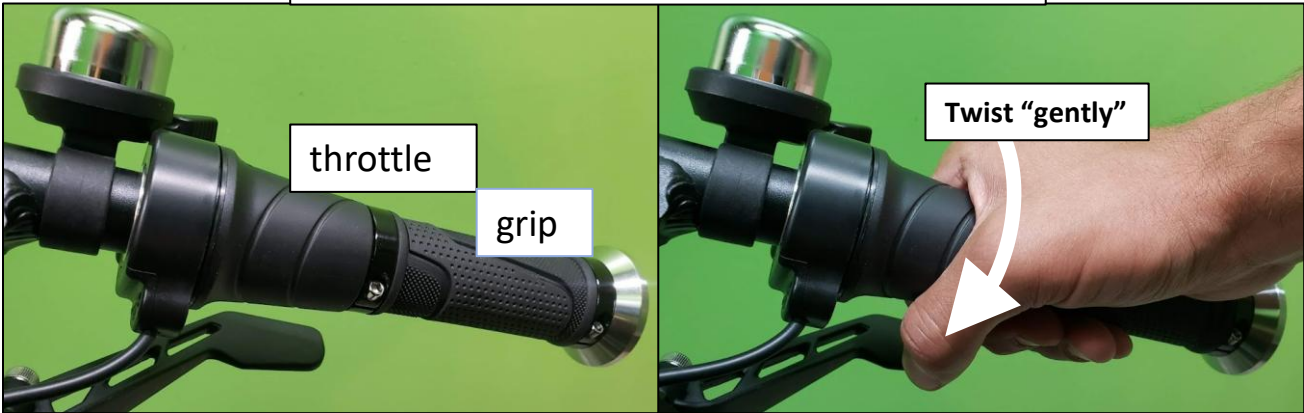
Left brake
lever
FRONT WHEEL

Apply brakes “gently and evenly” (left and right).
Do not slam on the brakes, as it may lock the
wheels and you lose control.



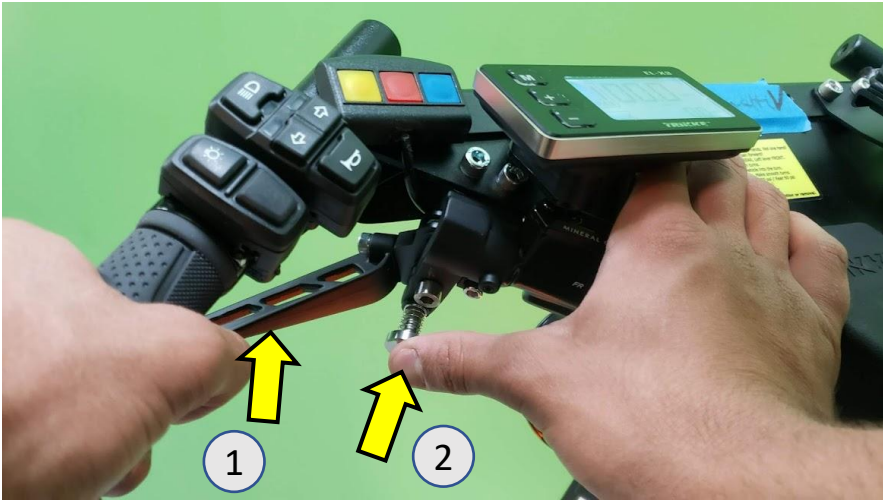
DO NOT
Apply
heavy braking
on turns

THROTTLE



PARKING

Locking Parking Brakes



LOCK

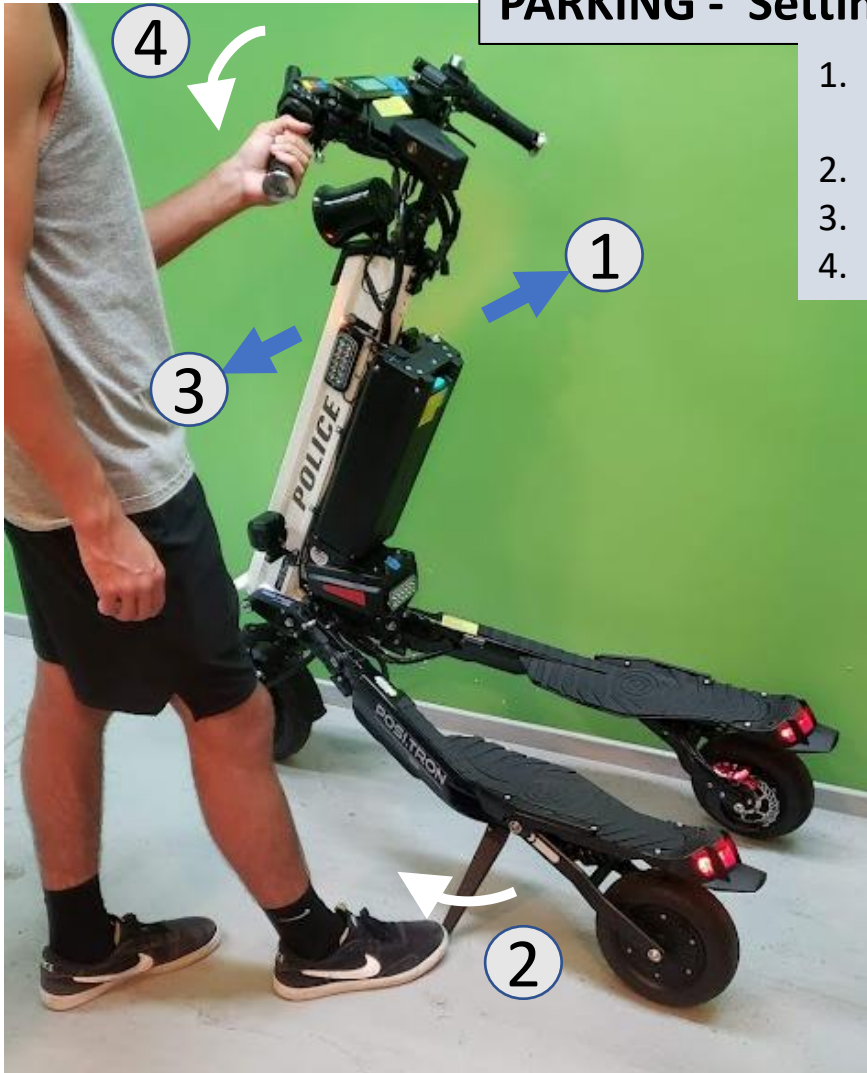
- 1- squeeze brake lever
- 2- push in the plunger
- 3- release brake lever



UNLOCK

- 1- squeeze brake lever

PARKING - Setting the kickstand

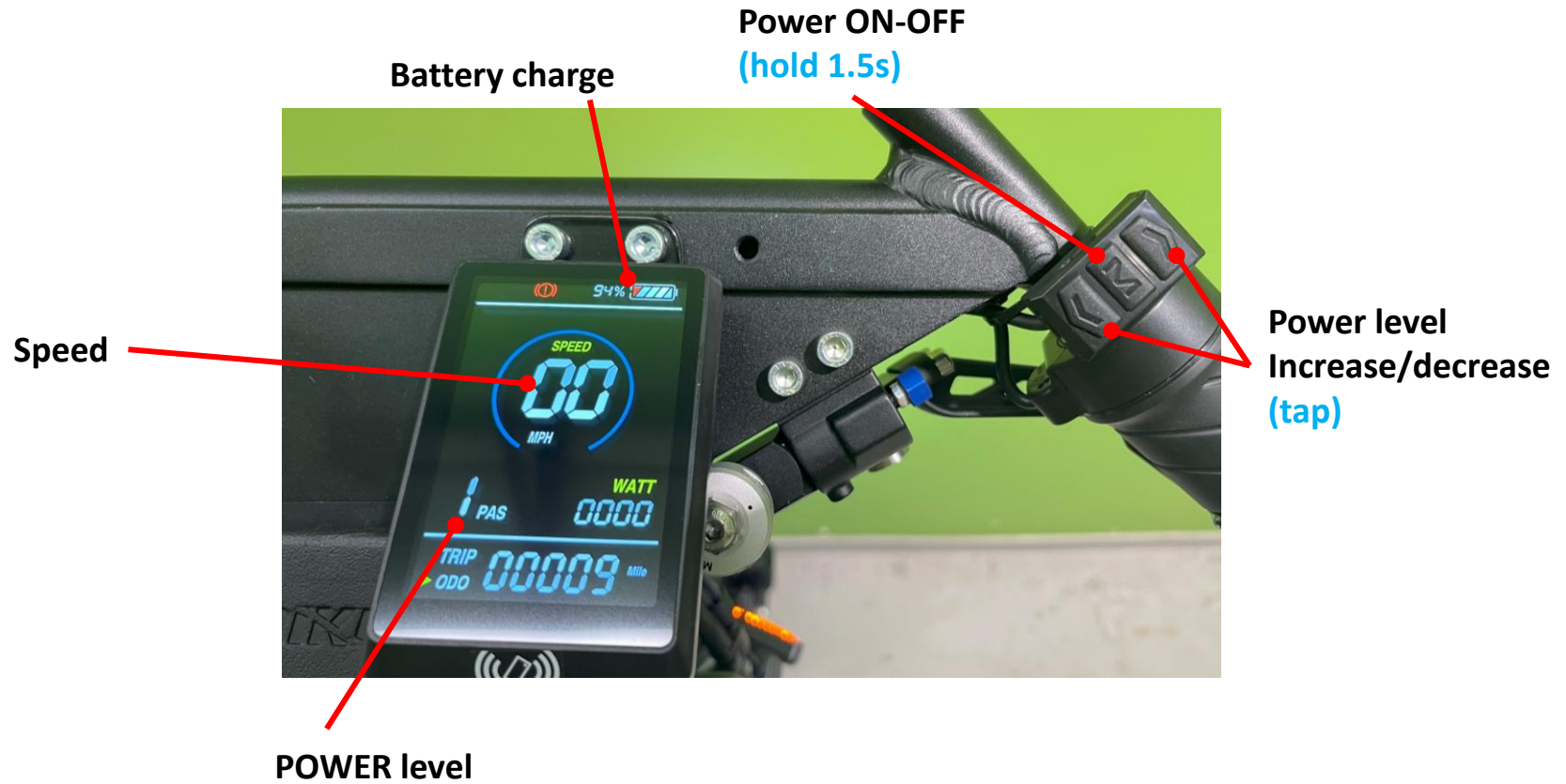


1. Get on the left side of the vehicle and hold the handlebar with your left hand. Lean the vehicle away from you.
2. Set the kickstand
3. Lean the vehicle over the kickstand.
4. Turn the handlebar to the left.



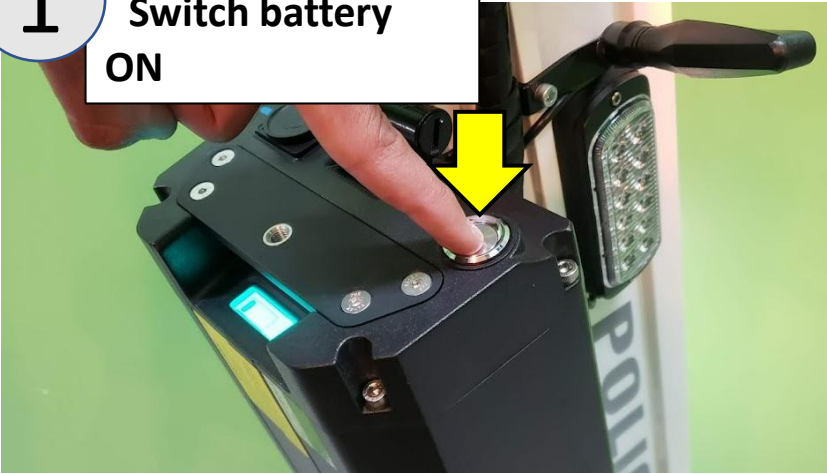
UNPARKING - Retracting the kickstand

DRIVE DISPLAY

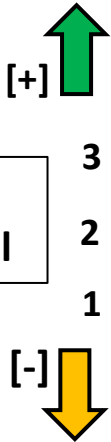


GETTING READY TO RIDE

1 Switch battery ON



3 Adjust POWER Level



[M]

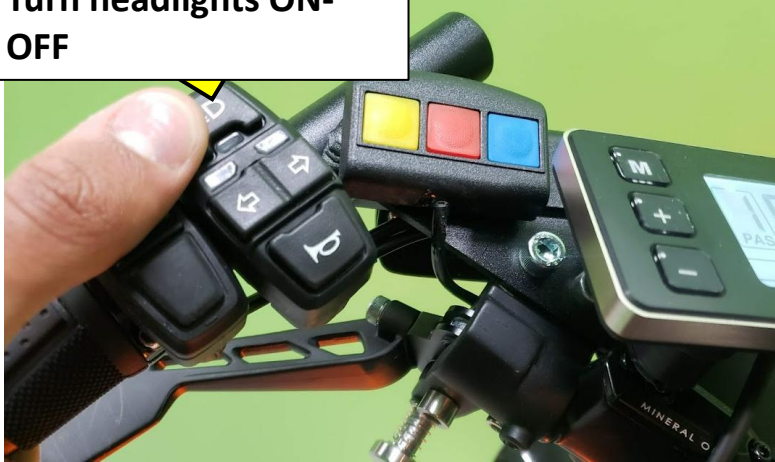
2 Turn ON drive



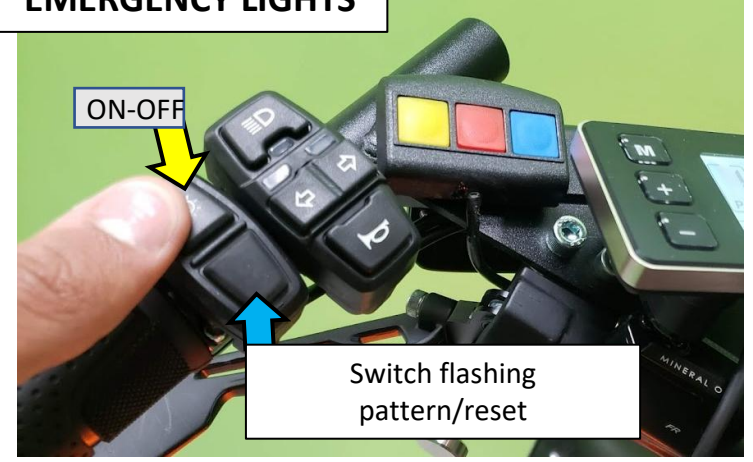
Optional Key FOB



Turn headlights ON-OFF



EMERGENCY LIGHTS



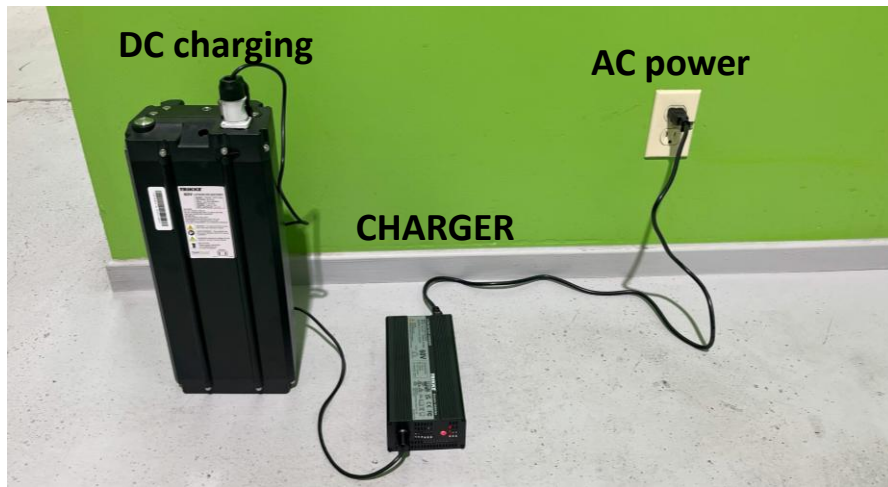
Beep horn



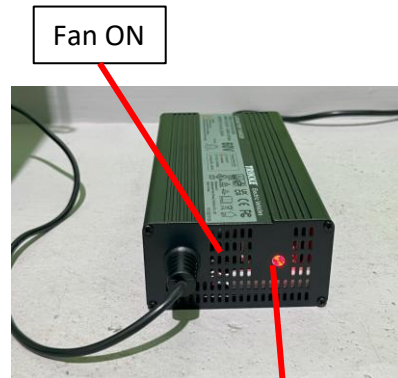
SIREN



CHARGING

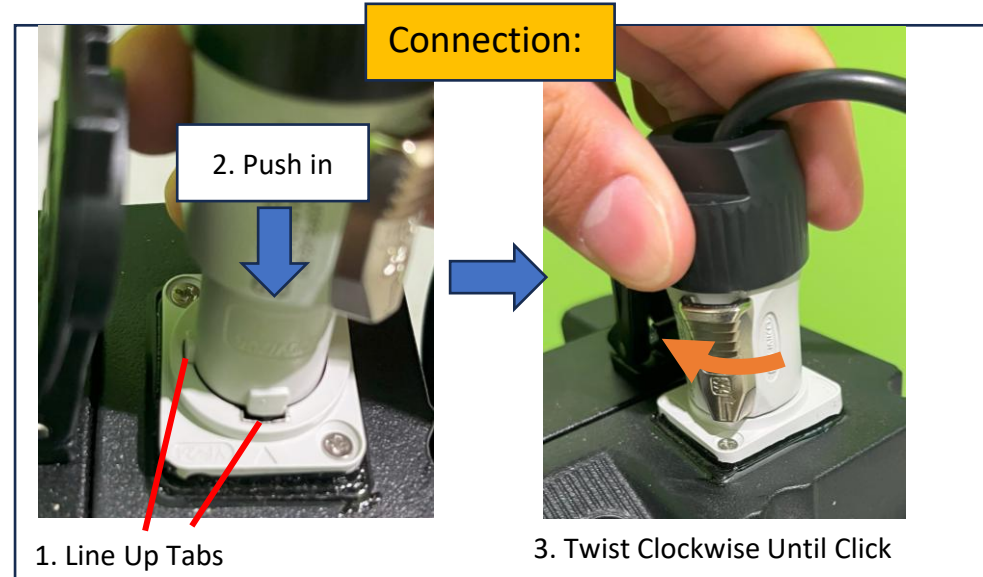


GREEN - not charging or battery already charged



RED - charging in progress

Connect/Disconnect charger plug



MAINTENANCE



1

Inflate the tires to max pressure **every 3 weeks**: front 50 psi / rear 65 psi



2

Wipe clean with a soft cloth and all-purpose cleaner

WARNING #1



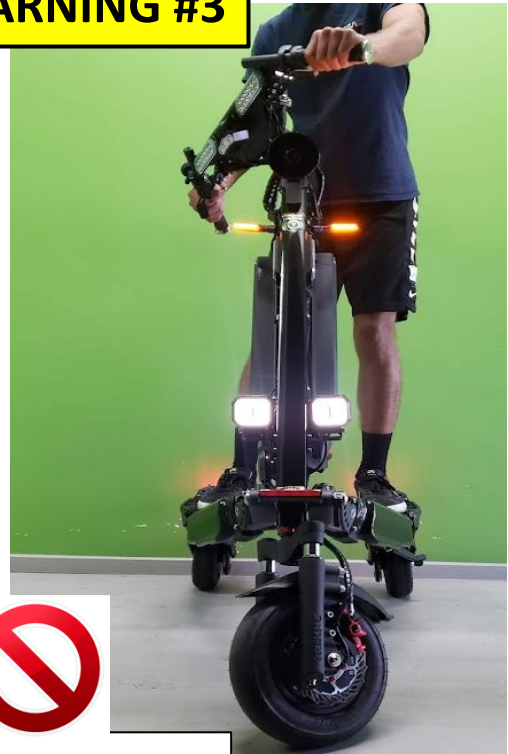
DO NOT
Take your hand off
the handlebar
while riding

WARNING #2



DO NOT
LEAN BACK
on TAKE-
OFF

WARNING #3

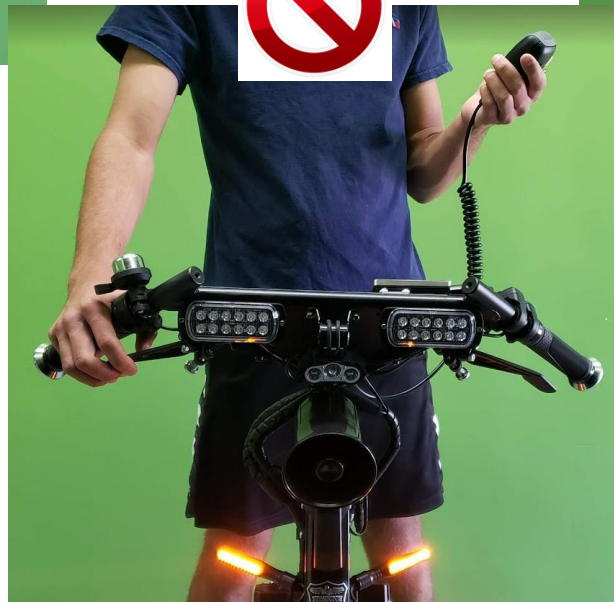


DO NOT
Turn too sharp

DO NOT
Apply heavy
brake on turns



NO, NO!





Do NOT take on escalators



Do NOT change vehicle settings



No showoff, no hotdogging



Do NOT submerge the wheels in water



Avoid riding on wet surface

Do not leave vehicle under the rain

